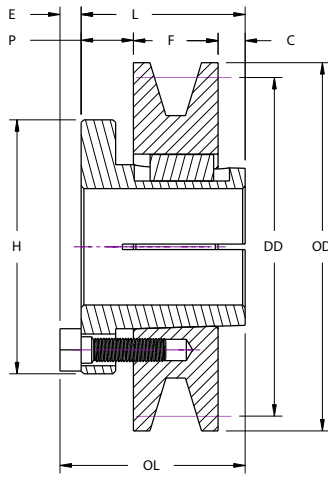
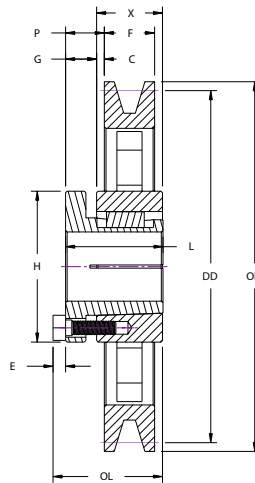


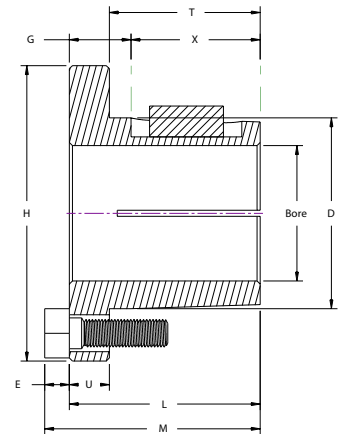
1B5V Series



Type 1



Type 2



Dimensions

For use with all "A, B, & 5V" belts.

DIAMETERS				PART NUMBER		TYPE	DIMENSIONS				Wt. (lbs.)
Datum "A" Belts	Datum "B" Belts	Pitch "5V" Belts	Outside	Sheave	Bushing		OL	P	C	X	
1 GROOVE, F = 1											
3.8	4.2	4.3	4.48	1B5V42	P1	1-Solid	2 3/16	5/8	5/16	1	2.5
4.0	4.4	4.5	4.68	1B5V44	P1	1-Solid	2 3/16	5/8	5/16	1	2.8
4.2	4.6	4.7	4.88	1B5V46	B	1-Solid	2 3/16	3/4	3/16	1	2.5
4.4	4.8	4.9	5.08	1B5V48	B	1-Solid	2 3/16	3/4	3/16	1	2.9
4.6	5.0	5.1	5.28	1B5V50	B	1-Solid	2 3/16	3/4	3/16	1	3.3
4.8	5.2	5.3	5.48	1B5V52	B	1-Solid	2 3/16	3/4	3/16	1	3.7
5.0	5.4	5.5	5.68	1B5V54	B	1-Solid	2 3/16	3/4	3/16	1	4.1
5.2	5.6	5.7	5.88	1B5V56	B	1-Solid	2 3/16	3/4	3/16	1	4.5
5.4	5.8	5.9	6.08	1B5V58	B	1-Solid	2 3/16	3/4	3/16	1	5.0
5.6	6.0	6.1	6.28	1B5V60	B	1-Solid	2 3/16	3/4	3/16	1	5.4
5.8	6.2	6.3	6.48	1B5V62	B	1-Web	2 3/16	3/4	3/16	1	5.3
6.0	6.4	6.5	6.68	1B5V64	B	1-Web	2 3/16	3/4	3/16	1	5.6
6.2	6.6	6.7	6.88	1B5V66	B	1-Web	2 3/16	3/4	3/16	1	6.0
6.4	6.8	6.9	7.08	1B5V68	B	1-Web	2 3/16	3/4	3/16	1	6.4
6.6	7.0	7.1	7.28	1B5V70	B	1-Web	2 3/16	3/4	3/16	1	6.8
7.0	7.4	7.5	7.68	1B5V74	B	1-Web	2 3/16	3/4	3/16	1	7.7
7.6	8.0	8.1	8.28	1B5V80	B	2-Arm	2 5/16	7/8	3/16	1 5/16	7.5
8.2	8.6	8.7	8.88	1B5V86	B	2-Arm	2 5/16	7/8	3/16	1 5/16	7.9
8.6	9.0	9.1	9.28	1B5V90	B	2-Arm	2 5/16	7/8	3/16	1 5/16	8.2
9.0	9.4	9.5	9.68	1B5V94	B	2-Arm	2 5/16	7/8	3/16	1 5/16	8.5
10.6	11.0	11.1	11.28	1B5V110	B	2-Arm	2 5/16	7/8	3/16	1 5/16	10.3
12.0	12.4	12.5	12.68	1B5V124	B	2-Arm	2 5/16	7/8	3/16	1 5/16	11.5
13.2	13.6	13.7	13.88	1B5V136	B	2-Arm	2 5/16	7/8	3/16	1 5/16	13.3
15.0	15.4	15.5	15.68	1B5V154	B	2-Arm	2 5/16	7/8	3/16	1 5/16	15.5
15.6	16.0	16.1	16.28	1B5V160	B	2-Arm	2 5/16	7/8	3/16	1 5/16	16.6
18.0	18.4	18.5	18.68	1B5V184	B	2-Arm	2 5/16	7/8	3/16	1 5/16	20.0
19.5	20.0	20.1	20.28	1B5V200	B	2-Arm	2 5/16	7/8	3/16	1 5/16	21.8
22.9	23.4	23.5	23.68	1B5V234	B	2-Arm	2 5/16	7/8	3/16	1 5/16	28.2
24.5	25.0	25.1	25.28	1B5V250	B	2-Arm	2 5/16	7/8	3/16	1 5/16	31.4
27.3	27.8	27.9	28.08	1B5V278	B	2-Arm	2 5/16	7/8	3/16	1 5/16	36.5

Dimensions

Part No.	Bore Range		Dimensions								Wt. (lbs.)
	Type 1	Type 2	M	L	G	E	T	U	D	H	
P1	1/2 - 1 7/16	1 1/2 - 1 3/4	2 3/16	1 15/16	5/8	1/4	1 17/32	13/32	1 15/16	3	1.3
B	1/2 - 1 15/16	2 - 2 7/16	2 3/16	1 15/16	3/4	1/4	1 7/16	1/2	2 5/8	3 11/16	1.8

All dimensions in inches.

