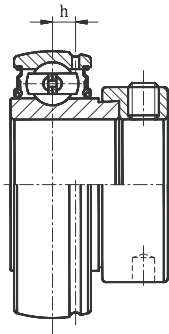
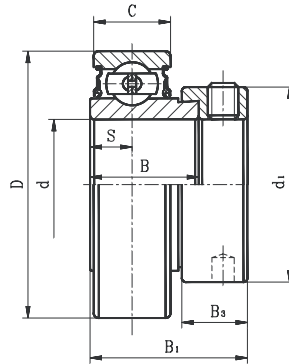


BALL BEARING INSERTS

SA LIGHT DUTY ECCENTRIC LOCKING COLLAR TYPE CSA LIGHT DUTY CYLINDRICAL O.D. TYPE



SA
(WITH G SUFFIX)



CSA



- Narrow inner ring bearing
- Lubrication groove with hole on collar side and additional oil hole on opposite side (G suffix).

| Bearing No. | Shaft Dia. d | | Dimension (in) (mm) | | | | | | | | Basic load rating (lbs) | | Weight (lb) |
|-------------|--------------|------|---------------------|--------|--------|----------------|--------|--------|----------------|----------------|-------------------------|--------|-------------|
| | (in.) | (mm) | D | C | B | B ₁ | S | h | B ₃ | d ₁ | Dynamic | Static | |
| SA201G | 1/2 | 12 | 1.5748 | 0.4724 | 0.7520 | 1.1260 | 0.2559 | 0.1417 | 0.5315 | 1.1260 | 2150 | 1070 | 0.31 |
| 201-8G | | 15 | | | | | | | | | | | |
| 202G | | 17 | | | | | | | | | | | |
| 202-10G | | 40 | | | | | | | | | | | |
| 203G | 11/16 | 17 | 1.6535 | 0.4724 | 0.6354 | 1.0402 | 0.2362 | 0.1969 | 0.5197 | 1.2992 | 2100 | 1120 | 0.26 |
| 203-11G | | 42 | | | | | | | | | | | |
| CSA104-12 | 3/4 | 20 | 1.8504 | 0.5512 | 0.8425 | 1.2165 | 0.2953 | 0.1575 | 0.5315 | 1.3110 | 2900 | 1500 | 0.40 |
| SA204-12G | 3/4 | 20 | 1.8504 | 0.5512 | 0.8425 | 1.2165 | 0.2953 | 0.1575 | 0.5315 | 1.3110 | 2900 | 1500 | 0.43 |
| 204G | | 47 | | | | | | | | | | | |
| SA205-14G | 7/8 | 25 | 2.0472 | 0.5906 | 0.8425 | 1.2165 | 0.2953 | 0.1693 | 0.5315 | 1.5000 | 3150 | 1770 | 0.46 |
| 205-15G | 15/16 | | | | | | | | | | | | |
| 205G | 1 | | | | | | | | | | | | |
| 205-16G | 52 | | | | | | | | | | | | |
| SA206-18G | 1-1/8 | 30 | 2.4409 | 0.6299 | 0.9370 | 1.4055 | 0.3543 | 0.1969 | 0.6260 | 1.7520 | 4400 | 2500 | 0.77 |
| 206G | 62 | | | | | | | | | | | | |
| 206-19G | 1-3/16 | | | | | | | | | | | | |
| 206-20G | 1-1/4 | | | | | | | | | | | | |
| SA207-20G | 1-1/4 | 35 | 2.8346 | 0.6693 | 1.0000 | 1.5315 | 0.3740 | 0.2244 | 0.6890 | 2.1890 | 5800 | 3400 | 1.23 |
| 207-21G | 1-5/16 | | | | | | | | | | | | |
| 207-22G | 1-3/8 | | | | | | | | | | | | |
| 207G | 72 | | | | | | | | | | | | |
| 207-23G | 1-7/16 | | | | | | | | | | | | |
| SA208-24G | 1-1/2 | 40 | 3.1496 | 0.7087 | 1.1890 | 1.7205 | 0.4331 | 0.2441 | 0.7205 | 2.3740 | 6660 | 4100 | 1.50 |
| 208-25G | 1-9/16 | | | | | | | | | | | | |
| 208G | 80 | | | | | | | | | | | | |
| SA209-26G | 1-5/8 | | | | | | | | | | | | |
| SA209-26G | 1-5/8 | 45 | 3.3465 | 0.7480 | 1.1890 | 1.7205 | 0.4331 | 0.2559 | 0.7205 | 2.5000 | 7160 | 4700 | 1.68 |
| 209-27G | 1-11/16 | | | | | | | | | | | | |
| 209-28G | 1-3/4 | | | | | | | | | | | | |
| 209G | 85 | | | | | | | | | | | | |
| SA210-30G | 1-7/8 | 50 | 3.5433 | 0.7874 | 1.1890 | 1.7205 | 0.4331 | 0.2559 | 0.7205 | 2.7520 | 7900 | 5200 | 1.83 |
| 210-31G | 1-15/16 | | | | | | | | | | | | |
| 210G | 90 | | | | | | | | | | | | |
| SA211-32G | 2 | | | | | | | | | | | | |
| SA211-32G | 2 | 55 | 3.9370 | 0.9449 | 1.2756 | 1.9055 | 0.4724 | 0.2835 | 0.8150 | 3.0000 | 9800 | 6600 | 2.57 |
| 211-34G | 2-1/8 | | | | | | | | | | | | |
| 211G | 100 | | | | | | | | | | | | |
| 211-35G | 2-3/16 | | | | | | | | | | | | |
| SA212-36G | 2-1/4 | 60 | 4.3307 | 0.9449 | 1.3150 | 1.9409 | 0.4724 | 0.3150 | 0.8780 | 3.3150 | 10700 | 7400 | 2.86 |
| 212G | 2-1/4 | | | | | | | | | | | | |
| 212-38G | 2-3/8 | | | | | | | | | | | | |
| 212-39G | 2-7/16 | | | | | | | | | | | | |

* Full cover metal shroud seal standard. Full contact rubber seal (2RS suffix) optional. Also available in free spinning design and/or with black oxide finish. Non-relubricatable units also available (remove G suffix). Contact factory.

