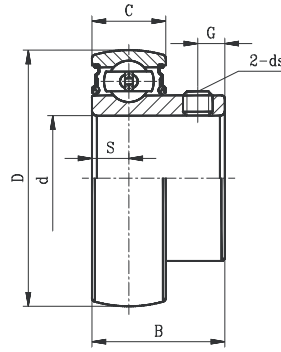
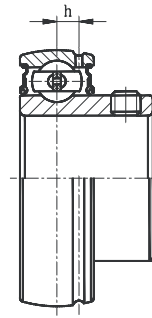


BALL BEARING INSERTS

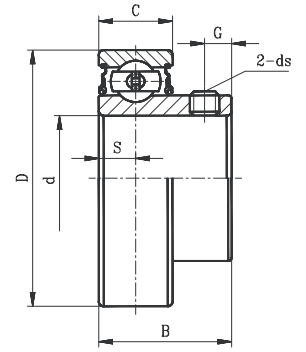
SB LIGHT DUTY SET SCREW LOCKING TYPE
CSB LIGHT DUTY CYLINDRICAL O.D. TYPE



SB



SB
(WITH G SUFFIX)



CSB

- Narrow inner ring bearing
- Lubrication groove with hole on set screw side and additional oil hole on opposite side (G suffix).

Bearing No.	Shaft Dia. d		Dimension (in) (mm)							Basic load rating (lbs)		Weight (lb)
	(in.)	(mm)	D	B	C	S	h	G	ds	Dynamic	Static	
SB201G		12										
201-8G	1/2	15	1.5748	0.8661	0.4724	0.2362	0.1417	0.1575		2150	1070	0.22
202G		15							10#-32UNF			
202-10G	5/8	17	40	22	12	6	3.6	4	M5X0.8			
203G		17										
203-11G	11/16											
SB204-12G	3/4	20	1.8504	0.9843	0.5512	0.2756	0.1575	0.1969	1/4-28UNF	2900	1500	0.31
204G		20	47	25	14	7	4	5	M6X1			
SB205-14G	7/8											
205-15G	15/16	25	2.0472	1.0630	0.5906	0.2953	0.1693	0.2165	1/4-28UNF	3150	1770	0.37
205G		25	52	27	15	7.5	4.3	5.5	M6X1			
205-16G	1											
SB206-18G	1-1/8											
206G		30	2.4409	1.1811	0.6299	0.3150	0.1969	0.2362	1/4-28UNF	4400	2500	0.57
206-19G	1-3/16		62	30	16	8	5	6	M6X1			
206-20G	1-1/4											
SB207-20G	1-1/4											
207-21G	1-5/16		2.8346	1.2598	0.6693	0.3346	0.2244	0.2559	1/4-28UNF	5800	3400	0.86
207-22G	1-3/8		72	32	17	8.5	5.7	6.5	M6X1			
207G		35										
207-23G	1-7/16											
SB208-24G	1-1/2											
208-25G	1-9/16	40	3.1496	1.3386	0.7087	0.3543	0.2441	0.2756	5/16-24UNF	6660	4100	1.19
208G		40	80	34	18	9	6.2	7	M8X1			
SB209-26G	1-5/8											
209-27G	1-11/16		3.3465	1.6220	0.7480	0.4016	0.2559	0.3228	5/16-24UNF	7160	4700	1.5
209-28G	1-3/4		85	41.2	19	10.2	6.5	8.2	M8X1			
209G		45										
SB210-30G	1-7/8											
210-31G	1-15/16		3.5433	1.7126	0.7874	0.4291	0.2559	0.3622	5/16-24UNF	7900	5200	1.76
210G		50	90	43.5	20	10.9	6.5	9.2	M8X1			
SB211-32G	2											
211-34G	2-1/8		3.9370	1.7835	0.9055	0.4646	0.2835	0.3858	5/16-24UNF	9800	6600	2.2
211G		55	100	45.3	23	11.8	7.2	9.8	M8X1			
211-35G	2-3/16											
SB212-36G	2-1/4											
212G		60	4.3307	2.1142	0.9449	0.5866	0.3150	0.3858	3/8-24UNF	10770	7400	2.86
212-39G	2-7/16		110	53.7	24	14.9	8	9.8	M10X1.25			

* Full cover metal shroud seal standard. Full contact rubber seal (2RS suffix) optional. Also available in free spinning design and/or with black oxide finish. Non-relubricatable units also available (remove G suffix). Contact factory.

