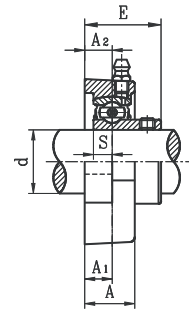
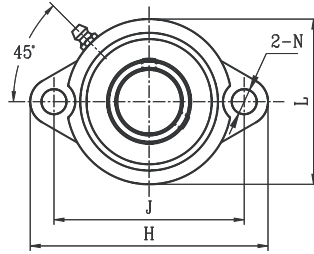
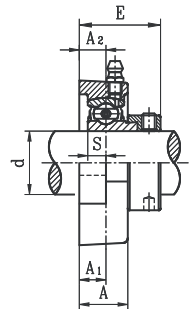


TWO BOLT FLANGE UNITS

SBLF LIGHT DUTY SET SCREW LOCKING TYPE



SBLF



SALF

- Cast iron housing
- Narrow inner ring bearing

Unit No.	Shaft Dia. d		Dimension (in) (mm)								Bolt Size (in)	Bearing No.	Housing No.	Weight (lb)		
	(in.)	(mm)	H	J	L	A ₂	A	A ₁	N	S					E	
SBLF201G 201-8G 202G	1/2	12											1/4	SB201G 201-8G 202G	LF203	0.590
202-10G 203G	5/8	15	3-3/16	2-1/2	2-7/32	3/8	23/32	3/8	5/16	1/4	1					
203-11G	11/16	17	81	63.5	56	9.5	18	9.5	8	6.0	25.5					
SBLF204-12G 204G	3/4	20	3-9/16	2-13/16	2-13/32	7/16	25/32	7/16	13/32	9/32	1-5/32	5/16	SB204-12G 204G	LF204	0.720	
SBLF205-14G 205G 205-15G 205-16G	7/8 15/16 1	25	3-3/4	3	2-17/32	7/16	25/32	7/16	13/32	5/16	1-7/32	5/16	SB205-14G 205-15G 205G 205-16G	LF205	0.83	
SBLF206-18G 206G 206-19G 206-20G	1-1/8 1-3/16 1-1/4	30	4-15/32	3-9/16	3	15/32	7/8	15/32	15/32	5/16	1-11/32	3/8	SB206-18G 206G 206-19G 206-20G	LF206	1.230	
SBLF207-20G 207-21G 207-22G 207G 207-23G	1-1/4 1-5/16 1-3/8 1-7/16	35	4-13/16	3-15/16	3-1/2	1/2	15/16	17/32	15/32	11/32	1-7/16	3/8	SB207-20G 207-21G 207-22G 207G 207-23G	LF207	1.760	

SALF LIGHT DUTY ECCENTRIC LOCKING COLLAR TYPE

Unit No.	Shaft Dia. d		Dimension (in) (mm)								Bolt Size (in)	Bearing No.	Housing No.	Weight (lb)		
	(in.)	(mm)	H	J	L	A ₂	A	A ₁	N	S					E	
SALF201G 201-8G 202G	1/2	12											1/4	SA201G 201-8G 202G	LF203	0.660
202-10G 203G	5/8	15	3-3/16	2-1/2	2-7/32	3/8	23/32	3/8	5/16	1/4	1-1/4					
203-11G	11/16	17	81	63.5	56	9.5	18	9.5	8	6.5	31.6					
SALF204-12G 204G	3/4	20	3-9/16	2-13/16	2-13/32	7/16	25/32	7/16	13/32	5/16	1-11/32	5/16	SA204-12G 204G	LF204	0.730	
SALF205-14G 205G 205-15G 205-16G	7/8 15/16 1	25	3-3/4	3	2-17/32	7/16	25/32	7/16	13/32	5/16	1-11/32	5/16	SA205-14G 205-15G 205G 205-16G	LF205	0.93	
SALF206-18G 206G 206-19G 206-20G	1-1/8 1-3/16 1-1/4	30	4-15/32	3-9/16	3	15/32	7/8	15/32	15/32	11/32	1-17/32	3/8	SA206-18G 206G 206-19G 206-20G	LF206	1.320	
SALF207-20G 207-21G 207-22G 207G 207-23G	1-1/4 1-5/16 1-3/8 1-7/16	35	4-13/16	3-15/16	3-1/2	17/32	15/16	17/32	15/32	3/8	1-21/32	3/8	SA207-20G 207-21G 207-22G 207G 207-23G	LF207	1.870	

* Full cover metal shroud seal standard. Full contact rubber seal (2RS suffix) optional.
Non-relubricatable units also available (remove G suffix). Contact factory.

