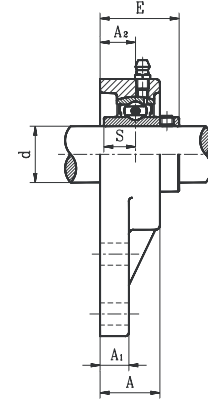
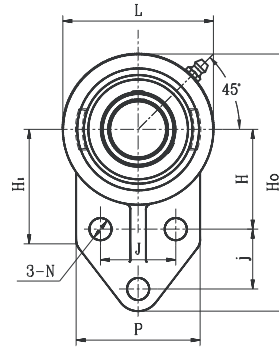


# FLANGE BRACKET UNITS

## UCFB STANDARD DUTY SET SCREW LOCKING TYPE



- Cast iron housing
- Wide inner ring bearing

Unit No.	Shaft Dia. d (in.) (mm)	Dimension (in) (mm)													Bolt Size (in)	Bearing No.	Housing No.	Weight (lb)
		H <sub>0</sub>	L	H <sub>1</sub>	P	H	j	J	A	A <sub>1</sub>	A <sub>2</sub>	N	E	S				
UCFB201S 201-8S 202S 202-10S 203S 203-11S	1/2 15 5/8 17 11/16	12 4-3/32 104 55 1-31/32 50 1-15/16 49 1-19/32 40 1-1/16 27 1-3/16 30 15/16 23.5 13/32 10 9/16 14 13/32 10 1-3/16 29.9 7/16 11.5	5/16	UC201S 201-8S 202S 202-10S 203S 203-11S	FB203	0.93												
UCFB201 201-8 202 202-10 203 203-11 204-12 204	1/2 15 5/8 17 11/16 3/4 20	4-5/16 109 2-3/8 60 2-1/16 52 2-1/16 52 1-21/32 42 1-1/16 27 1-1/4 32 1 25.5 7/16 11 19/32 15 13/32 10 1-5/16 33.0 1/2 12.7	5/16	UC201 201-8 202 202-10 203 203-11 204-12 204	FB204	1.43												
UCFB205-14 205-15 205 205-16	7/8 15/16 25 1	4-9/16 116 2-11/16 68 2-1/16 52 2-7/32 56 1-25/32 45 1-1/16 27 1-11/32 34 1-1/16 27.0 1/2 13 5/8 16 13/32 10 1-13/32 35.7 9/16 14.3	5/16	UC205-14 205-15 205 205-16	FB205	1.52												
UCFB206-18 206 206-19 206-20	1-1/8 30 1-3/16 132 1-1/4	5-3/16 132 3-5/32 80 2-5/32 55 2-9/16 65 1-31/32 50 1-5/32 29 1-19/32 40 107/32 31.0 1/2 13 23/32 18 13/32 10 1-19/32 40.2 5/8 15.9	5/16	UC206-18 206 206-19 206-20	FB206	2.05												
UCFB207-20 207-21 207-22 207 207-23	1-1/4 1-5/16 1-3/8 35 1-7/16	5-11/16 144 3-9/16 90 2-7/16 62 2-3/4 70 2-5/32 55 1-1/4 32 1-13/16 46 1-5/16 33.0 9/16 14 3/4 19 13/32 10 1-3/4 44.4 11/16 17.5	5/16	UC207-20 207-21 207-22 207 207-23	FB207	2.90												
UCFB208-24 208-25 208	1-1/2 1-9/16 40	6-15/32 164 3-15/16 100 2-27/32 72 3-1/16 78 2-3/8 60 1-5/8 41 1-31/32 50 1-3/8 35.0 11/16 17 27/32 21 15/32 12 2-1/32 51.2 3/4 19.0	3/8	UC208-24 208-25 208	FB208	4.00												
UCFB209-26 209-27 209-28 209	1-5/8 1-11/16 1-3/4 45	6-29/32 175 4-1/4 108 3 76 3-5/32 80 2-9/16 65 1-11/16 43 2-1/8 54 1-1/2 38.0 5/8 16 7/8 22 15/32 12 1-1/16 52.2 3/4 19.0	3/8	UC209-26 209-27 209-28 209	FB209	4.40												
UCFB210-30 210-31 210 210-32	1-7/8 1-15/16 50 2	7-1/4 184 4-1/2 114 3-7/32 82 3-3/8 86 2-11/16 68 1-13/16 46 2-9/32 58 1-17/32 39.0 5/8 16 7/8 22 15/32 12 2-5/32 54.6 3/4 19.0	3/8	UC210-30 210-31 210 210-32	FB210	5.10												
UCFB211-32 211-34 211 211-35	2 2-1/8 55 2-3/16	8-3/16 208 5-1/32 128 3-3/8 86 3-17/32 90 3-1/16 78 1-31/32 50 2-7/16 62 1-11/16 42.5 23/32 18 1 25 9/16 14 2-5/16 58.4 7/8 22.2	1/2	UC211-32 211-34 211 211-35	FB211	6.60												
UCFB212-36 212 212-38 212-39	2-1/4 60 2-3/8 2-7/16	8-13/16 224 5-1/2 140 3-9/16 90 3-23/32 94 3-5/16 84 2-5/32 55 2-19/32 66 1-7/8 47.5 3/4 19 1-5/32 29 9/16 14 2-23/32 68.7 1 25.4	1/2	UC212-36 212 212-38 212-39	FB212	8.40												
UCFB213-40 213	2-1/2 65	9-5/8 244 6 152 3-3/4 95 4-1/32 102 3-5/8 92 2-3/8 60 2-3/4 70 1-15/16 49 25/32 20 1-3/16 30 9/16 14 2-3/4 69.7 1 25.4	1/2	UC213-40 213	FB213	10.50												

\* Dual seal standard. Triple lip seal (R3 suffix) optional.

