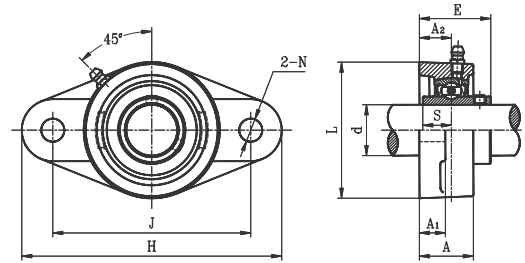


TWO BOLT FLANGE UNITS

UCFL STANDARD DUTY SET SCREW LOCKING TYPE



- Cast iron housing
- Wide inner ring bearing

Unit No.	Shaft Dia. d		Dimension (in) (mm)									Bolt Size (in)	Bearing No.	Housing No.	Weight (lb)	
	(in.)	(mm)	H	J	L	A ₂	A ₁	A	E	N	S					
UCFL201S		12														
201-8S	1/2	15	3-29/32	3	2-1/4	19/32	7/16	1	1-7/32	7/16	7/16	3/8	UC201S			
202S	5/8	17	99	76.5	57	15	11	24.5	30.9	11.5	11.5		201-8S	FL203	0.99	
202-10S													202S			
203S													202-10S			
203-11S	11/16												203S			
UCFL201		12											UC201			
201-8	1/2	15											201-8	FL204	1.12	
202	5/8	17	4-7/16	3-9/16	2-3/8	19/32	7/16	1	1-5/16	7/16	1/2	3/8	202			
202-10			113	90.0	60	15	11	25.5	33.3	11.5	12.7		202-10			
203	11/16												203			
203-11	3/4	20											203-11			
204-12													204-12			
204													204			
UCFL205-14	7/8		5-1/8	3-29/32	2-11/16	5/8	17/32	1-1/16	1-13/32	7/16	9/16	3/8	UC205-14	FL205	1.32	
205-15	15/16	25	130	99.0	68	16	13	27.0	35.7	11.5	14.3		205-15			
205													205			
205-16	1												205-16			
UCFL206-18	1-1/8		5-27/32	4-5/8	3-5/32	23/32	17/32	1-7/32	1-19/32	7/16	5/8	3/8	UC206-18	FL206	1.98	
206	1-3/16	30	148	117.0	80	18	13	31.0	40.2	11.5	15.9		206			
206-19	1-1/4												206-19			
206-20													206-20			
UCFL207-20	1-1/4		6-11/32	5-1/8	3-9/16	3/4	9/16	1-11/32	1-3/4	9/16	11/16	1/2	UC207-20	FL207	2.84	
207-21	1-5/16	35	161	130.0	90	19	14	34.0	44.4	14.0	17.5		207-21			
207-22	1-3/8												207-22			
207													207			
207-23	1-7/16												207-23			
UCFL208-24	1-1/2		6-7/8	5-11/16	3-15/16	27/32	9/16	1-7/16	2-1/32	9/16	3/4	1/2	UC208-24	FL208	3.30	
208-25	1-9/16	40	175	144.0	100	21	14	36.0	51.2	14.0	19.0		208-25			
208													208			
UCFL209-26	1-5/8		7-13/32	5-27/32	4-1/4	7/8	5/8	1-1/2	2-1/16	23/32	3/4	5/8	UC209-26	FL209	4.18	
209-27	1-11/16		188	148.0	108	22	16	38.0	52.2	18.0	19.0		209-27			
209-28	1-3/4	45											209-28			
209													209			
UCFL210-30	1-7/8		7-3/4	6-3/16	4-17/32	7/8	5/8	1-19/32	2-5/32	23/32	3/4	5/8	UC210-30	FL210	4.85	
210-31	1-15/16	50	197	157.0	115	22	16	40.0	54.6	18.0	19.0		210-31			
210													210			
210-32	2												210-32			
UCFL211-32	2		8-13/16	7-1/4	5-1/8	1	23/32	1-11/16	2-5/16	23/32	7/8	5/8	UC211-32	FL211	6.83	
211-34	2-1/8	55	224	184.0	130	25	18	43.0	58.4	18.0	22.2		211-34			
211													211			
211-35	2-3/16												211-35			
UCFL212-36	2-1/4		9-27/32	7-31/32	5-1/2	1-5/32	23/32	1-29/32	2-23/32	23/32	1	5/8	UC212-36	FL212	8.82	
212		60	250	202.0	140	29	18	48.0	68.7	18.0	25.4		212			
212-38	2-3/8												212-38			
212-39	2-7/16												212-39			
UCFL213-40	2-1/2		10-5/32	8-9/32	6-3/32	1-3/16	25/32	1-31/32	2-3/4	29/32	1	3/4	UC213-40	FL213	11.20	
213		65	258	210.0	155	30	20	50.0	69.7	23.0	25.4		213			
UCFL214-44	2-3/4		10-7/16	8-1/2	6-5/16	1-7/32	25/32	2-1/8	2-31/32	29/32	1-3/16	3/4	UC214-44	FL214	12.34	
214		70	265	216.0	160	31	20	54.0	75.4	23.0	30.2		214			
UCFL215-47	2-15/16		10-27/32	8-7/8	6-15/32	1-11/32	7/8	2-3/16	3-3/32	29/32	1-5/16	3/4	UC215-47	FL215	13.66	
215	3	75	275	225.0	164	34	22	55.0	78.5	23.0	33.3		215			
215-48													215-48			
UCFL216		80	11-13/32	9-3/16	7-3/32	1-11/32	7/8	2-9/32	3-9/32	1	1-5/16	7/8	UC216	FL216	17.19	
			290	233.0	180	34	22	58.0	83.3	25.0	33.3					
UCFL217-52	3-1/4		12	9-25/32	7-1/2	1-13/32	7/8	2-15/32	3-7/16	1	1-11/32	7/8	UC217-52	FL217	21.60	
217		85	305	248.0	190	36	22	63.0	87.6	25.0	34.1		217			
UCFL218-56	3-1/2		12-19/32	10-7/16	8-1/16	1-19/32	29/32	2-11/16	3-13/16	1	1-9/16	7/8	UC218-56	FL218	27.33	
218		90	320	265.0	205	40	23	68.0	96.3	25.0	39.7		218			

* Dual seal standard. Triple lip seal (R3 suffix) optional.

