

EPT E CATALOG - PART DETAIL

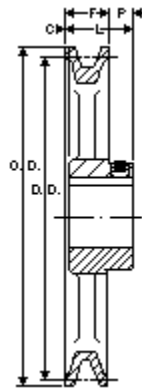
Browning AK51X3/4

Finished Bore Sheave, 3/4" Bore, Uses 3L, A Belt, 1 Groove

Product Type:	Finished Bore Sheave
Type of Belt:	3L, A
Number of Grooves:	1
Material:	Cast Iron
Typical Applications:	
Feature 1:	Largest Selection of finished bore sheaves of any other manufacturer - Browning offers finished bore sheaves in both A & B Combination (A/B) configuration. 1, 2 & 3 Grooves are available to meet any fractional horsepower requirement.
Std Package Quantity:	1



Images may not be an exact representation of the product



Part No	Description	Bore	D.D. (A)	PD (A)	D.D. (3L)	C
1026665	AK51X3/4	3/4	4.70	4.9	4.36	1/16
F	P	L	O.D.			
3/4	15/32	1 5/32	4.95			