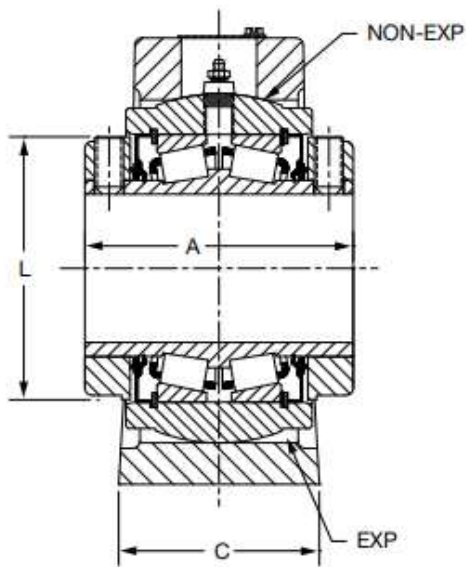
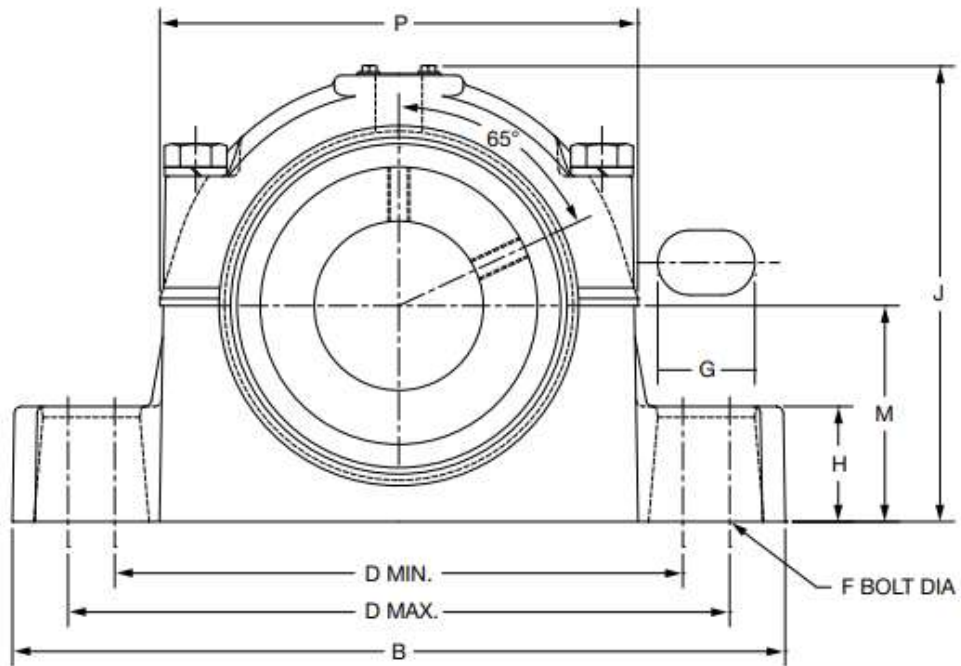
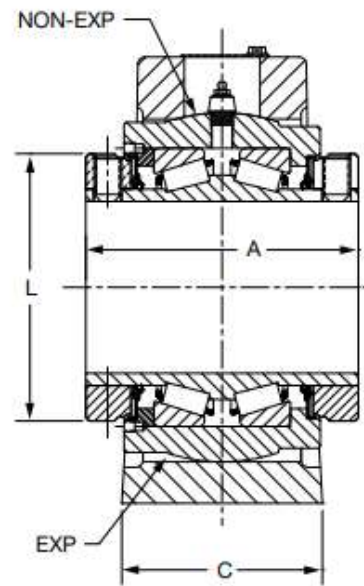


**DOUBLE-INTERLOCK Pillow Block - Inch
2-BOLT BASE**



1-3/16" THRU 3" CONSTRUCTION



3-3/16" THRU 3-1/2" CONSTRUCTION

DOUBLE-INTERLOCK Pillow Block - Inch 2-BOLT BASE

| Gray Iron Non-Expansion | | | | | | Gray Iron Expansion | | | | | |
|-------------------------|-------------------|-------------------|--------------|--------------------|-------------------------|---------------------|-------------------|-------------------|--------------|--------------------|-------------------------|
| Shaft Size Inches# | Shaft Size Symbol | Pillow Block Assy | Housing Only | Bearing Inner Unit | PIL. BLK. Wt., Aprx Lbs | Shaft Size Inches# | Shaft Size Symbol | Pillow Block Assy | Housing Only | Bearing Inner Unit | PIL. BLK. Wt., Aprx Lbs |
| 1-1/4 | 104 | 023329 | 056130 | 023508 | 9 | 1-1/4 | 104 | 023376 | 056100 | 023508 | 9 |
| 1-3/8 | 106 | 023330 | 056132 | 023509 | 11 | 1-3/8 | 106 | 023377 | 056102 | 023509 | 11 |
| 1-7/16 | 107 | 023331 | 056132 | 023510 | 11 | 1-7/16 | 107 | 023378 | 056102 | 023510 | 11 |
| 1-1/2 | 108 | 023332 | 056134 | 023511 | 15 | 1-1/2 | 108 | 023379 | 056104 | 023511 | 15 |
| 1-5/8 | 110 | 023333 | 056134 | 023512 | 15 | 1-5/8 | 110 | 023380 | 056104 | 023512 | 15 |
| 1-11/16 | 111 | 023334 | 056134 | 023513 | 15 | 1-11/16 | 111 | 023381 | 056104 | 023513 | 15 |
| 1-3/4 | 112 | 023335 | 056136 | 023514 | 18 | 1-3/4 | 112 | 023382 | 056106 | 023514 | 18 |
| 1-15/16 | 115 | 023337 | 056136 | 023516 | 17 | 1-15/16 | 115 | 023384 | 056106 | 023516 | 17 |
| 2 | 200 | 023338 | 056136 | 023517 | 17 | 2 | 200 | 023385 | 056106 | 023517 | 17 |
| 2-3/16 | 203 | 023339 | 056138 | 023518 | 25 | 2-3/16 | 203 | 023386 | 056108 | 023518 | 22 |
| 2-1/4 | 204 | 023340 | 056140 | 023519 | 29 | 2-1/4 | 204 | 023387 | 056110 | 023519 | 29 |
| 2-7/16 | 207 | 023341 | 056140 | 023520 | 26 | 2-7/16 | 207 | 023388 | 056110 | 023520 | 26 |
| 2-1/2 | 208 | 023342 | 056140 | 023521 | 26 | 2-1/2 | 208 | 023389 | 056110 | 023521 | 26 |
| 2-11/16 | 211 | 023343 | 056142 | 023522 | 41 | 2-11/16 | 211 | 023390 | 056112 | 023522 | 42 |
| 2-3/4 | 212 | 023344 | 056142 | 023523 | 41 | 2-3/4 | 212 | 023391 | 056112 | 023523 | 42 |
| 2-15/16 | 215 | 023345 | 056142 | 023524 | 40 | 2-15/16 | 215 | 023392 | 056112 | 023524 | 41 |
| 3 | 300 | 023346 | 056142 | 023525 | 40 | 3 | 300 | 023393 | 056112 | 023525 | 41 |
| 3-3/16 | 303 | 023347 | 056144 | 023526 | 67 | 3-3/16 | 303 | 023394 | 056114 | 023526 | 69 |
| 3-7/16 | 307 | 023349 | 056144 | 023528 | 66 | 3-7/16 | 307 | 023396 | 056114 | 023528 | 68 |
| 3-1/2 | 308 | 023350 | 056144 | 023529 | 66 | 3-1/2 | 308 | 023397 | 056114 | 023529 | 68 |

Description = P2B-DI-207R For 2-7/16" Size

Description = P2B-DI-207RE For 2-7/16" Size

Consult DODGE For Sizes Not Listed.

Consult DODGE For Sizes Not Listed.

Non-Expansion Furnished Unless Otherwise Specified

| Shaft Size Inches | A | B | C | D | | F Bolt Dia. | G | H | J | L | M | P | Exp* |
|-------------------|------|-------|------|-------|-------|-------------|------|------|------|------|------|-------|------|
| | | | | Min. | Max. | | | | | | | | |
| 1-1/4 | 2.75 | 7.50 | 1.88 | 6.00 | 6.38 | 3/8 | 0.67 | 1.00 | 4.53 | 2.25 | 2.13 | 5.00 | 3/32 |
| 1-3/8 | 3.00 | 8.00 | 2.19 | 6.25 | 6.63 | 1/2 | 0.75 | 1.25 | 5.23 | 2.75 | 2.38 | 5.52 | 3/32 |
| 1-7/16 | | | | | | | | | | | | | |
| 1-1/2 | 3.38 | 9.00 | 2.38 | 6.88 | 7.63 | 1/2 | 1.00 | 1.38 | 5.75 | 3.19 | 2.63 | 5.81 | 3/32 |
| 1-5/8 | | | | | | | | | | | | | |
| 1-11/16 | | | | | | | | | | | | | |
| 1-3/4 | 3.50 | 10.00 | 2.53 | 7.38 | 8.44 | 5/8 | 1.30 | 1.50 | 6.27 | 3.44 | 2.88 | 6.36 | 9/32 |
| 1-15/16 | | | | | | | | | | | | | |
| 2 | | | | | | | | | | | | | |
| 2-3/16 | | | | | | | | | | | | | |
| 2-1/4 | 4.00 | 12.00 | 2.81 | 9.27 | 10.25 | 5/8 | 1.27 | 1.75 | 7.03 | 4.06 | 3.25 | 7.38 | 9/32 |
| 2-7/16 | | | | | | | | | | | | | |
| 2-1/2 | | | | | | | | | | | | | |
| 2-11/16 | 4.50 | 13.44 | 2.94 | 9.88 | 11.50 | 3/4 | 1.69 | 2.00 | 7.92 | 4.72 | 3.75 | 8.31 | 9/32 |
| 2-3/4 | | | | | | | | | | | | | |
| 2-15/16 | | | | | | | | | | | | | |
| 3 | | | | | | | | | | | | | |
| 3-3/16 | 5.00 | 16.00 | 3.44 | 12.81 | 13.81 | 7/8 | 1.50 | 2.25 | 9.42 | 5.50 | 4.50 | 10.09 | 9/32 |
| 3-7/16 | | | | | | | | | | | | | |
| 3-1/2 | | | | | | | | | | | | | |