

EPT E CATALOG - PART DETAIL

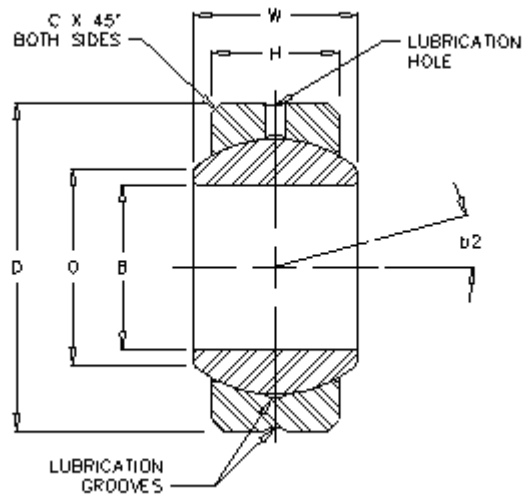
SealMaster COM 10

Plain Spherical Bearing; Two-Piece; Commercial

Bore:	0.6250
Series:	Commercial
Lubrication Type:	Grease
Max Static Radial Load:	21,000
Misalignment Angle - b2:	9.0
Race Material:	Carbon Steel - corrosion resistant coating
Ball Material:	Alloy Steel - heat treated - chrome plated



Images may not be an exact representation of the product



Part No	Description	B	D	W	H	C
1821000000	COM 10	0.6250	1.1875	0.625	0.500	0.035
Ball Dia.	O	b2				
0.968	0.739	9.0				