

EPT E CATALOG - PART DETAIL

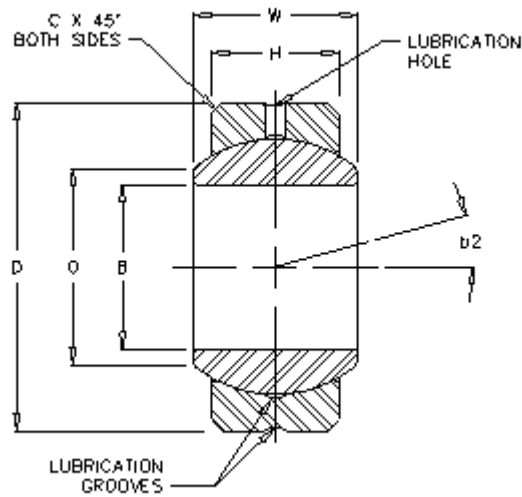
SealMaster COM 16

Plain Spherical Bearing; Two-Piece; Commercial

Bore:	1.0000
Series:	Commercial
Lubrication Type:	Grease
Max Static Radial Load:	54,700
Misalignment Angle - b2:	9.5
Race Material:	Carbon Steel - corrosion resistant coating
Ball Material:	Alloy Steel - heat treated - chrome plated



Images may not be an exact representation of the product



Part No	Description	B	D	W	H	C
1821600000	COM 16	1.0000	1.7500	1.000	0.797	0.045
Ball Dia.	O	b2				
1.500	1.118	9.5				